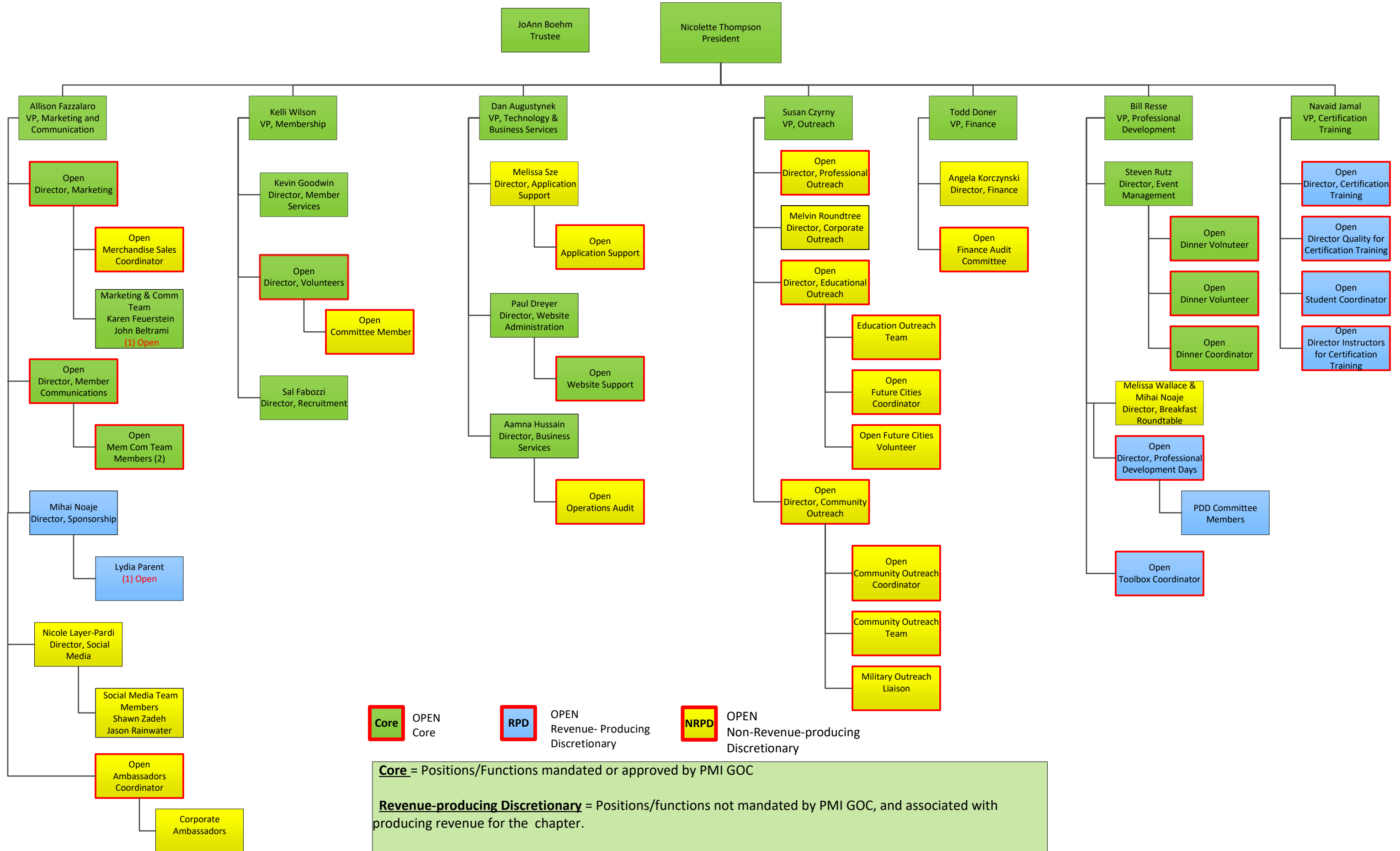


PMI Buffalo Board Organization Chart – 2022



Core OPEN Core
 RPD OPEN Revenue- Producing Discretionary
 NRPD OPEN Non-Revenue-producing Discretionary

Core = Positions/Functions mandated or approved by PMI GOC
Revenue-producing Discretionary = Positions/functions not mandated by PMI GOC, and associated with producing revenue for the chapter.
Non-revenue-producing Discretionary = Positions/frnctions not mandated by PMI GOC, and not associated with producing revenue for the chapter.